

Christian Reid
Estate Agents



Cranleigh

£950pcm

Elmbridge Road, Cranleigh, GU6 8LP



2 Bedrooms



1 Receptions



1 Bathrooms

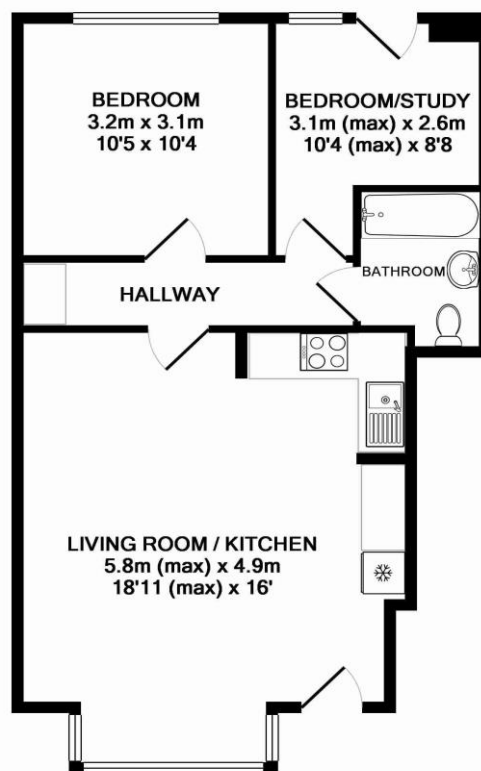


Ground Floor



EPC: C

REDUCED | A fully renovated ground floor maisonette | Large open plan living room/kitchen | Large double bedroom | Bedroom Two/Study | Contemporary style kitchen & bathroom | Private Patio garden | Private Parking space | GCH | Double glazed throughout | Pets Considered | Available Now | Unfurnished



TOTAL APPROX. FLOOR AREA 49.3 SQ.M. (530 SQ.FT.)

Whilst every attempt has been made to ensure the accuracy of the floor plan contained here, measurements of doors, windows, rooms and any other items are approximate and no responsibility is taken for any error, omission, or mis-statement. This plan is for illustrative purposes only and should be used as such by any prospective purchaser. The services, systems and appliances shown have not been tested and no guarantee as to their operability or efficiency can be given
Made with Metropix ©2015